

# Harney Duck Club

1,987.47+/- Deeded Acres | 1,148.8+/- Acres of Water Rights

Lower Silvers River Ranch

NO  
TRESPASSING  
VIOLATORS  
WILL BE  
PROSECUTED

Selling Oregon Farms & Ranches Since 1960

# FOR SALE





This Eastern Oregon ranch combines productive cattle operations with outstanding recreational potential. Currently supporting 150–175 pairs year-round, the property benefits from multiple seasonal water sources and well-planned cross-fencing with irrigated pastures. While it is presently managed as a working cattle ranch, the land also carries a rich history as a duck hunting club during the late 1970s and early 1980s, owing to its 3.6 miles of frontage along Malheur Lake and the Malheur National Wildlife Refuge. For a future owner, the ranch not only offers proven livestock capacity but also the opportunity to revive its legacy as a premier hunting property.

Bordering the southern edge of the land, the Malheur National Wildlife Refuge is one of the most important bird habitats in North America, attracting up to 25 million migratory birds annually. Hundreds of thousands of waterfowl, tens of thousands of shorebirds, and globally significant species such as Ross's Geese and Sandhill Cranes pass through the area each year. Beyond birdlife, the ranch also supports healthy populations of antelope and mule deer, with tall cover and plentiful feed offering excellent habitat. An on-site overlook tower provides an ideal vantage point for glassing wildlife, and the property's size creates opportunities to qualify for Landowner Preference (LOP) tags.

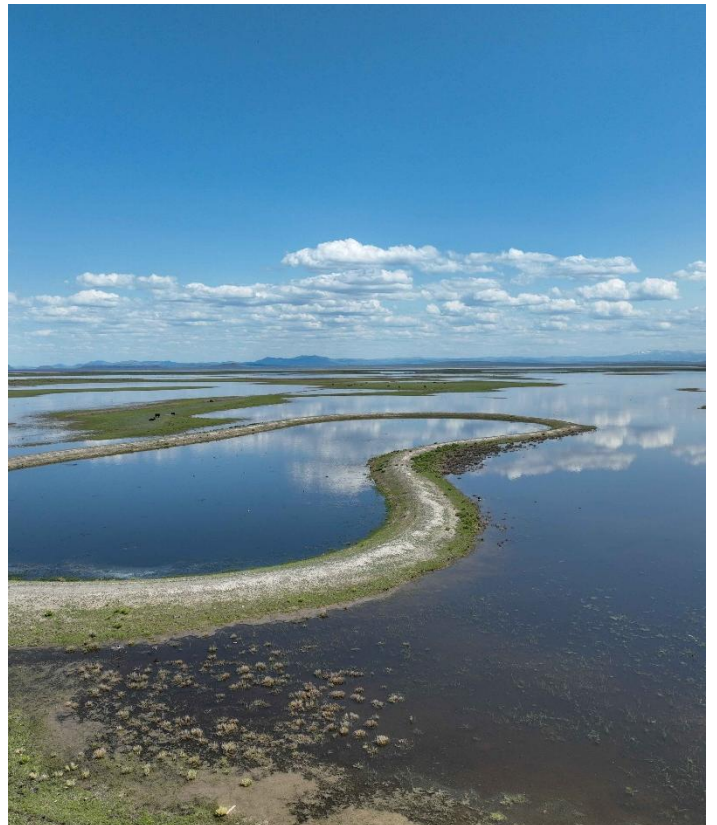
From a cattle operation standpoint, the ranch is well equipped. Cross fencing, irrigated pastures, native rangeland, and strategically placed wells provide flexibility and reliable water sources for stock use. The current owner has run 150–175 pairs while also haying certain sections for winter feed. A modest set of working corrals includes a sorting pen, crowding alley, squeeze chute, and loading chute.

All irrigation for the ranch is supplied by the Silvies River, which flows into Malheur Lake. Water is distributed through a system of ditches and headgates that efficiently carry it across the acreage, with additional water supplied directly from Malheur Lake during high-water years.

Improvements besides the corrals are a stick-built home & GP building. The home consists of 2,690 sqft & is currently being renovated by the homeowner to be a 4 bed & 2 bath setup providing an adequate for a future owner or ranch hand. The GP building provides great enclosed storage for all times of the year.

Whether operated as a productive cattle ranch, developed into a premier hunting property, or enjoyed as a private retreat, this Eastern Oregon ranch offers an exceptional balance of lifestyle, income, and recreation. With its combination of irrigated pastures, abundant wildlife, and direct access to the Malheur National Wildlife Refuge, it presents a rare opportunity to own a large, versatile holding in one of Oregon's most renowned landscapes.





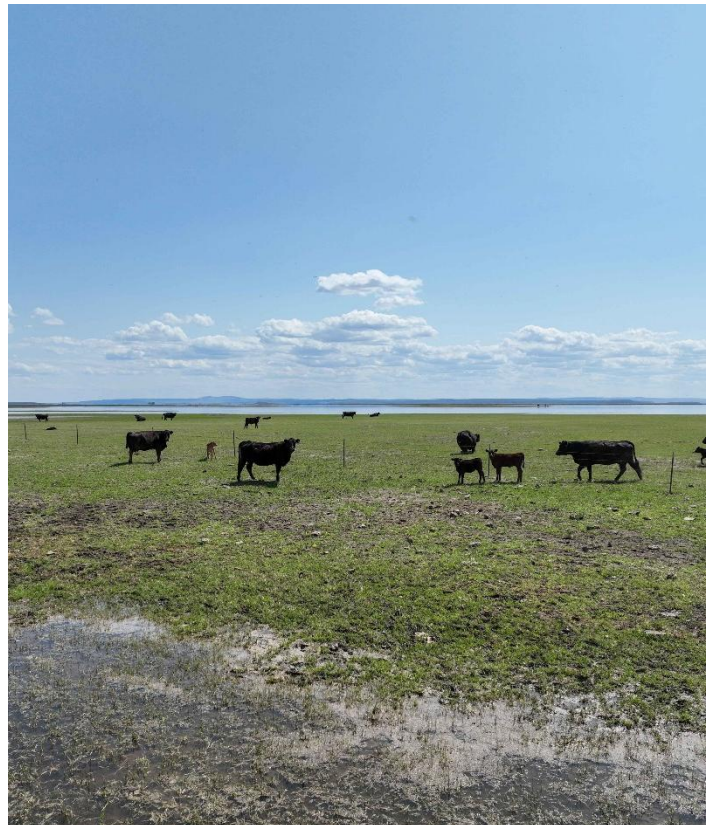
















### Surrounding Area

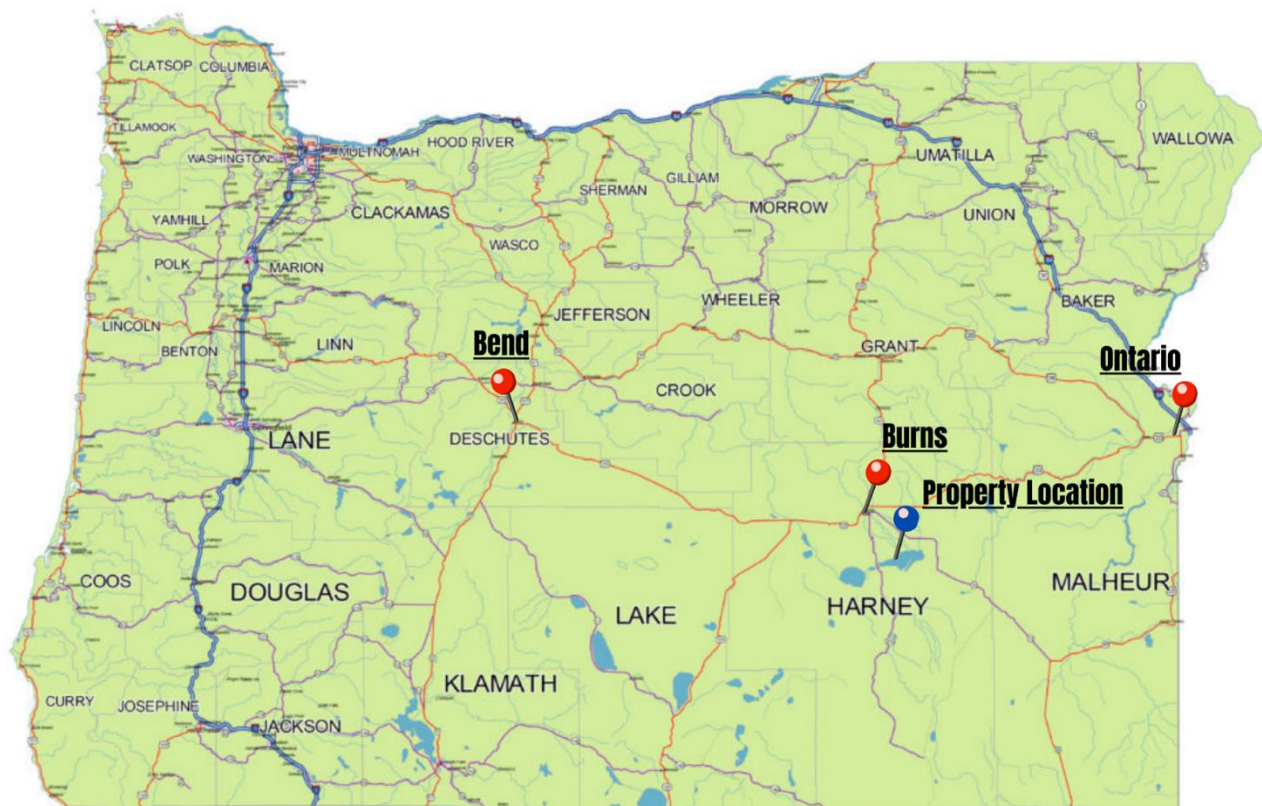
The property lies within Harney County, one of the largest and most scenic counties in the nation, spanning more than 10,000 square miles of high desert landscapes. The area is defined by its dramatic contrasts—from the rugged beauty of Steens Mountain to the south, overlooking the Alvord Desert and Trout Creek Mountains, to the forested northern ranges along the Silvies River. Wildlife is abundant here, with elk, pronghorn, mule deer, and countless bird species making the county a haven for outdoor enthusiasts and nature lovers.



At the heart of this region is **Malheur Lake** and the **Malheur National Wildlife Refuge**, which directly borders the property. The lake has long been a gathering place—first for Native American tribes such as the Paiute and Bannock, who sustained themselves from its rich resources and held cultural ceremonies along its shores, and today for tens of thousands of migratory birds that make it one of the Pacific Northwest’s premier birdwatching destinations. The refuge protects not only this thriving habitat but also the history and heritage tied to the lake.

The nearby community of Burns provides a central hub with access to shops, services, and a welcoming small-town atmosphere. Bend lies just two hours to the west and the Idaho border two hours to the east, each having their own commercial airport nearby. Together, the surrounding area offers a unique blend of wide-open spaces, rich history, and unmatched natural beauty centered around the tranquil waters of Malheur Lake.





0 100 200 Miles

**OREGON**

### Location

**Burns Oregon:** <https://www.cityofburnsor.gov/>  
28 min (23.3 mi)  
Population: 4,422 (2021)

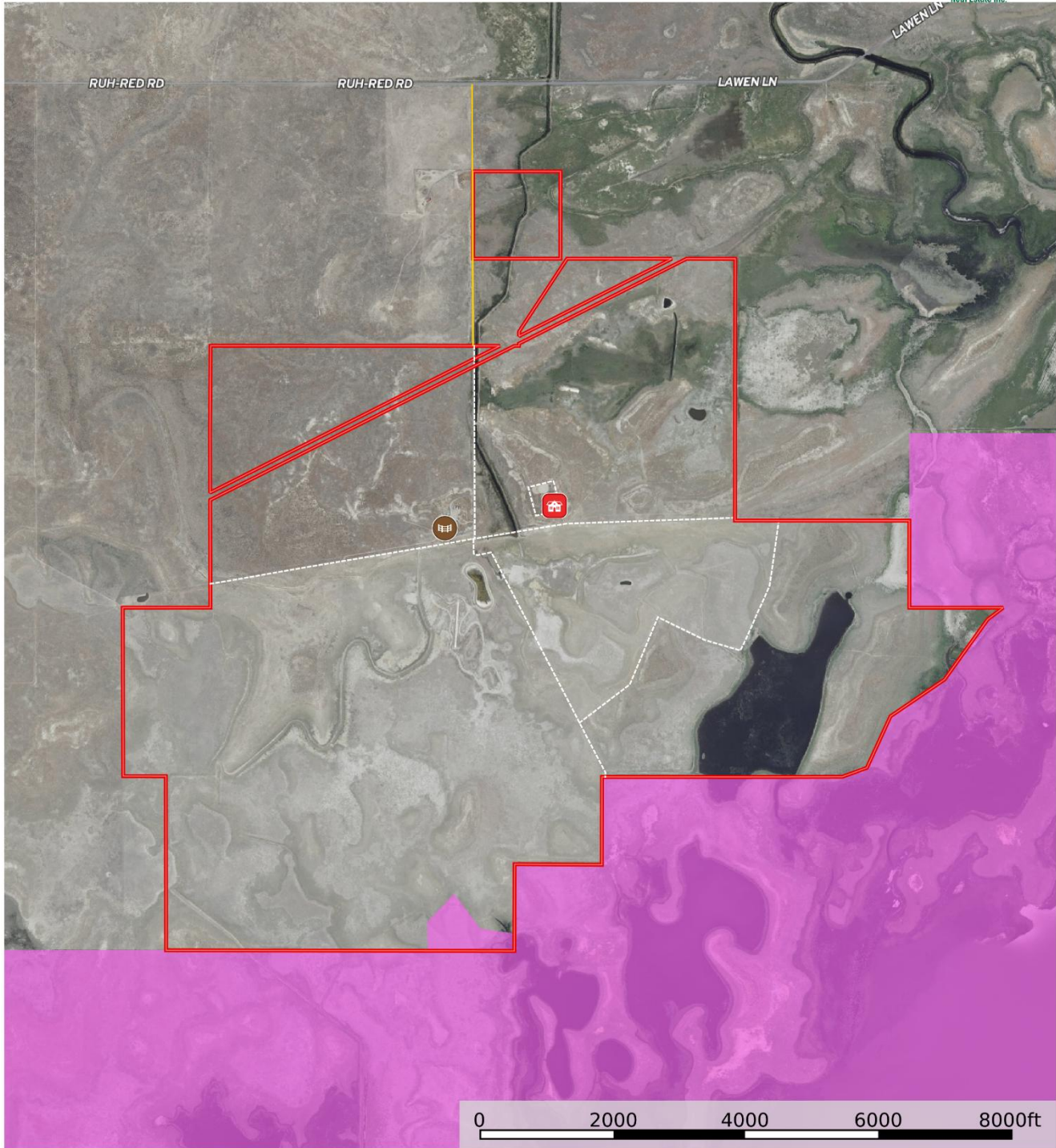
**Ontario Oregon:** <https://www.ontariooregon.org/>  
2 hour 22 min (135.8 mi)  
Population: 11,626 (2021)

**Bend Oregon:** <https://www.bendoregon.gov/>  
2 hr 39 min (153.8 mi)  
Population: 102,059 (2021)





**61687 Lawen Rd, Burns - Duck Club, Singhose**  
Oregon, AC +/-



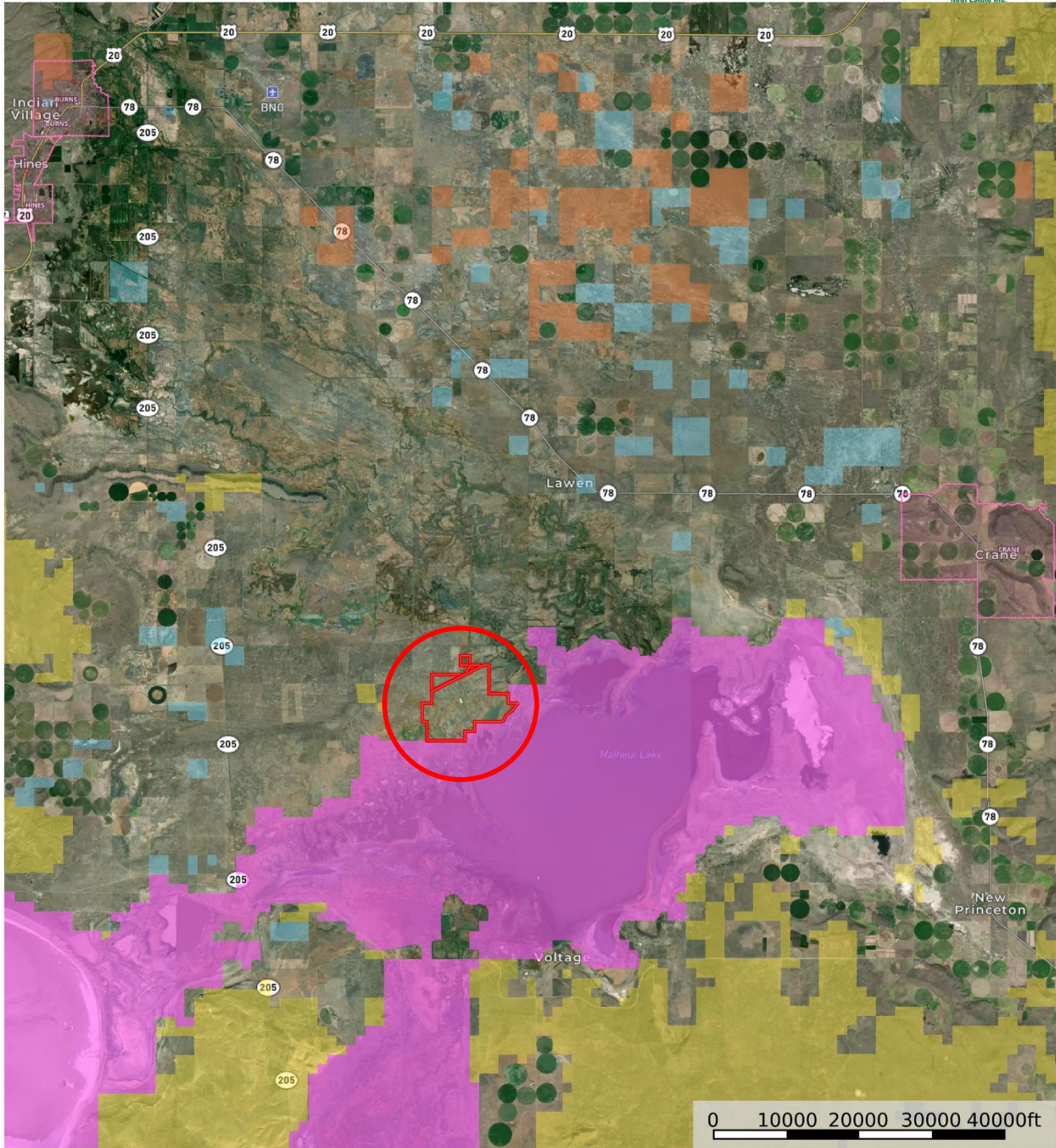
**United County Jett Blackburn Real Estate (map for illustration purposes only)**  
P: 541-413-5660    [www.jettblackburn.com](http://www.jettblackburn.com)    707 Ponderosa Village, Burns, OR 97720

**id.** The information contained herein was obtained from sources deemed to be reliable. Land id™ Services makes no warranties or guarantees as to the completeness or accuracy thereof.





**61687 Lawen Rd, Burns - Duck Club, Singhose**  
Oregon, AC +/-



Boundary Forest Service State Land Fish and Wildlife National Park Other BLM Local Government

**United County Jett Blackburn Real Estate (map for illustration purposes only)**  
P: 541-413-5660 [www.jettblackburn.com](http://www.jettblackburn.com) 707 Ponderosa Village, Burns, OR 97720

**id.** The information contained herein was obtained from sources deemed to be reliable. Land id™ Services makes no warranties or guarantees as to the completeness or accuracy thereof.





<b>ADDRESS:</b>	61687 Lawen Rd, Burns, OR 97720		
<b>TAX LOT MAPS:</b>	25S32E00-00-01003, 25S32E00-00-01000, 25S32E00-00-01004, 26S32N00-00-00200, & 25S32E00-00-04900		
<b>ACREAGE:</b>	1,987.47 +/- Deeded Acres - 10 Acres – Site - 288 Acres – Dryland Pasture - 1,689.47 Acres – Irrigated Pasture		
<b>OUTBUILDINGS:</b>	House – 1979 – 2,576 Sq.Ft. – 1 Bed, 2 Bath GP Shed – 1994 – 420 Sq.Ft. Corrals		
<b>WATER RIGHTS:</b>			
<b><u>CERT#</u></b>	<b><u>Prim.</u></b>	<b><u>Priority Date</u></b>	<b><u>Source</u></b>
Silvies River Decree	1,148.80	Dec. 31, 1900	Silvies River
<b>UTILITIES:</b>	Power – Harney Electric Cooperative Private Well Private Septic		
<b>TAXES:</b>	\$2,153.42 – Per County Site		
<b>PRICE:</b>	\$1,975,000.00		





**United Country Jett Blackburn Real Estate**

Jett Blackburn Real Estate Inc. is an independently owned brokerage franchised under United Country. First opened in 1960, Jett Blackburn Real Estate has been the oldest standing firm in their area specializing in sales of farms, ranches, hunting properties, recreational, & more. Curt Blackburn is the current owner & principal broker of Jett Blackburn Real Estate.

United Country is a franchise-based real estate marketing company that has shown tremendous success in the real estate industry for the last 95 years. Throughout the entire United States, UC has sold over 2.8 million acres in 2022 alone, with \$9.9 billion in sales all together that covered a majority of recreational, farms, & ranches. To help make these sales possible UC has a comprehensive marketing program that includes printed advertising and special property marketing websites for farms & ranches. These marketing sites include Western Livestock Journal, Land & Farm, Capital Press, Lands of America, Farm & Ranch, Lands.com, SPG's, and much more. They are partnered with Realtree United Country Hunting Properties & UC Ranch

**Presented By**



**Curt Blackburn**

[curt@jettblackburn.com](mailto:curt@jettblackburn.com)

(541)413-5777



**Jake Blackburn**

[jake@jettblackburn.com](mailto:jake@jettblackburn.com)

(541)413-5774