

Harvey Ranch - TBD CR 174, Gatesville TX - 158+/- Acres
Coryell County, Texas, 159 AC +/-



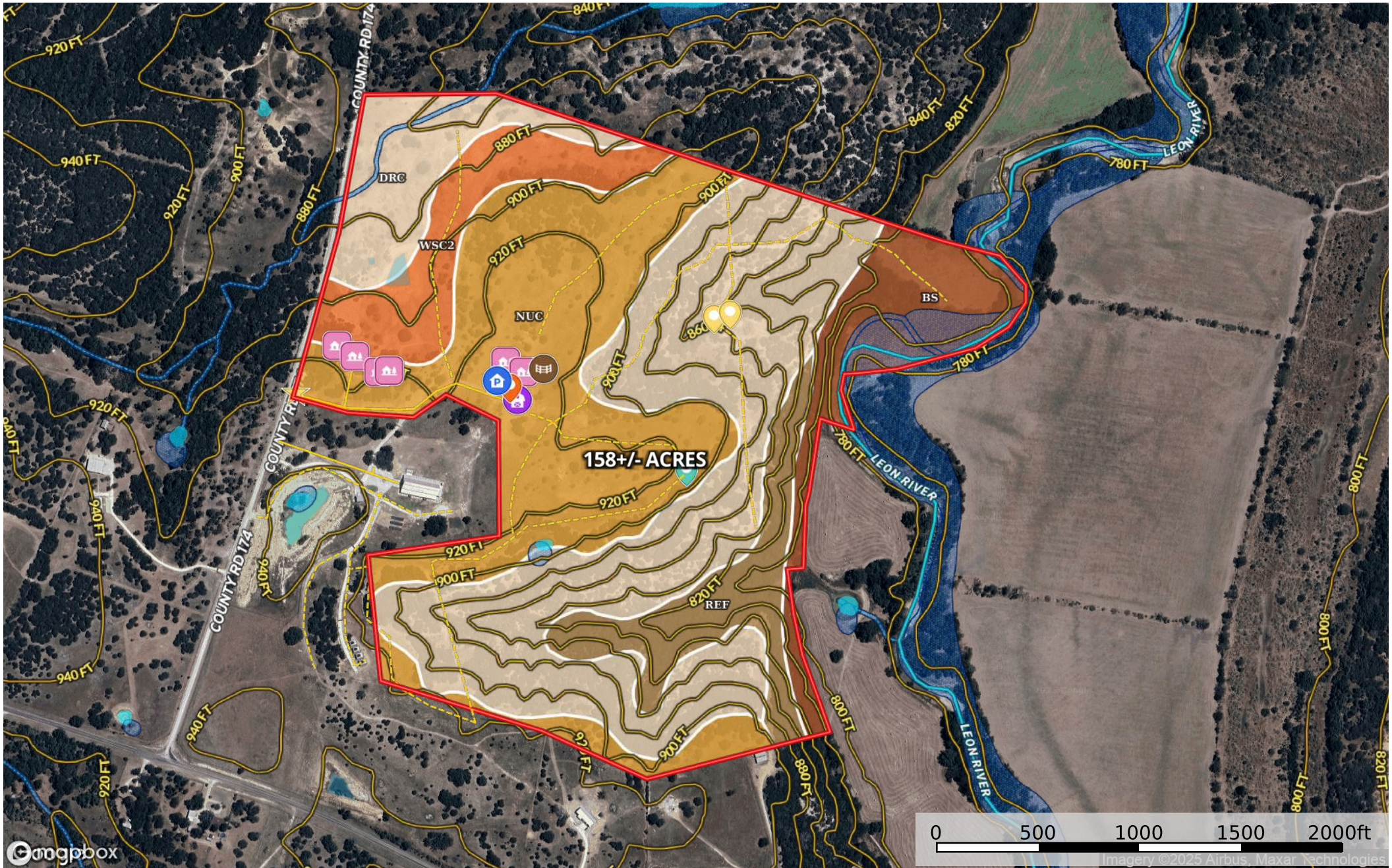
- Cliff
- Service Entrance
- View
- Covered Parking
- RV Hookup
- Pens
- Large Barn
- 6 Guest Cabins
- Primary Road
- Road / Trail
- TBD CR 174
- Pond / Tank
- Wetlands
- Riparian
- Stream, Intermittent
- River/Creek
- Water Body

Harvey Ranch - TBD CR 174, Gatesville TX - 158+/- Acres
Coryell County, Texas, 159 AC +/-



- Cliff
- Service Entrance
- View
- Covered Parking
- RV Hookup
- Pens
- Main Entrance
- Solar Panels
- Gate
- 10,000 SF Barndo
- Large Barn
- Original Barn
- 6 Guest Cabins
- 4 Guest Cabins
- Primary Road
- Road / Trail
- TBD CR 174
- More Acreage Available
- Pond / Tank
- Wetlands
- Riparian
- Stream, Intermittent
- River/Creek
- Water Body

Harvey Ranch - TBD CR 174, Gatesville TX - 158+/- Acres
Coryell County, Texas, 159 AC +/-



- Cliff
- Service Entrance
- View
- Covered Parking
- RV Hookup
- Pens
- Large Barn
- 6 Guest Cabins
- Primary Road
- Road / Trail
- TBD CR 174
- Pond / Tank
- Wetlands
- Riparian
- Stream, Intermittent
- River/Creek
- Water Body

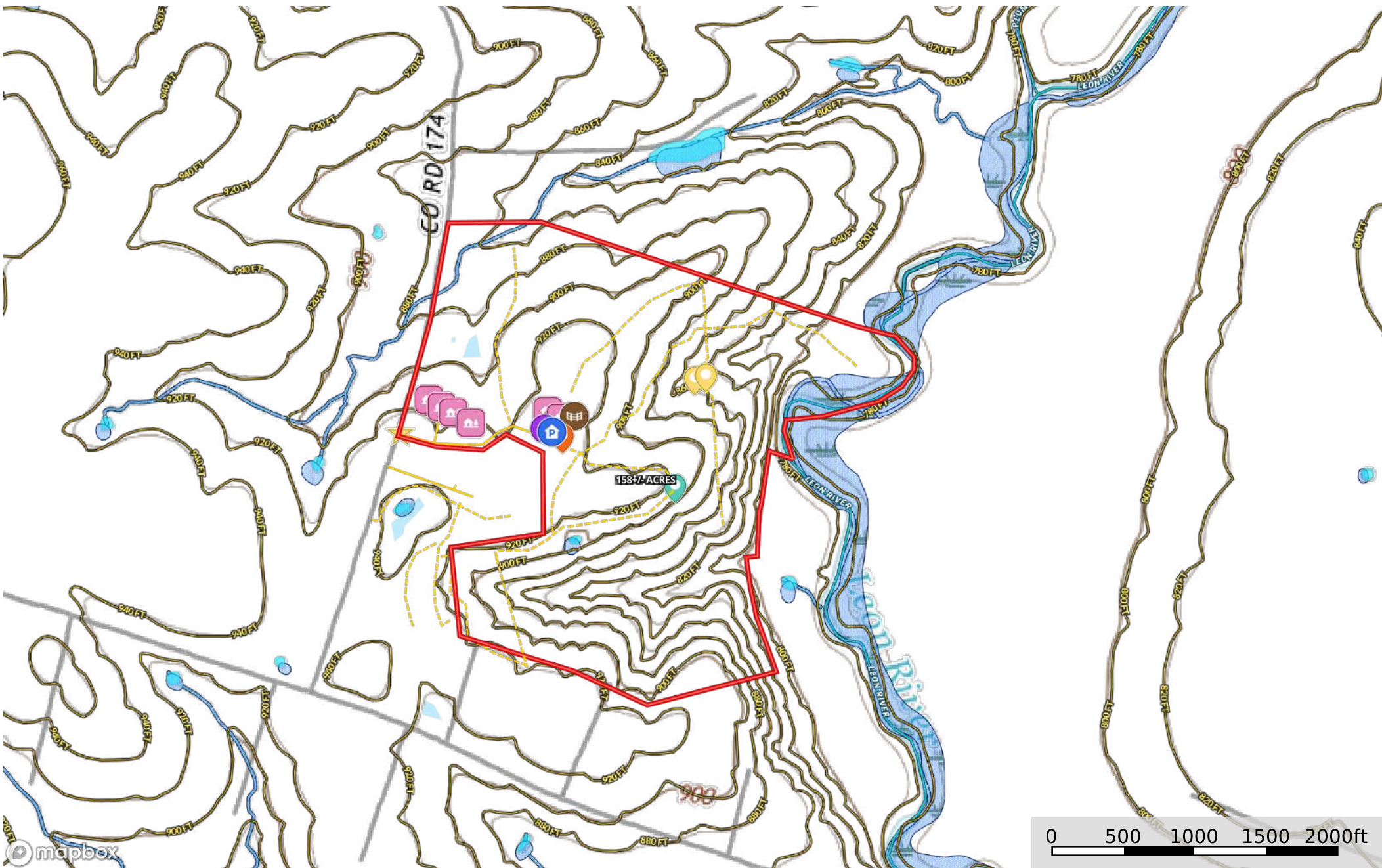
SOIL CODE	SOIL DESCRIPTION	ACRES	%	CPI	NCCPI	CAP
DrC	Doss-Real complex, 1 to 8 percent slopes	66.97	41.6	0	23	6e
NuC	Nuff very stony silty clay loam, 2 to 6 percent slopes	51.75	32.14	0	28	6s
Bs	Bosque clay loam, 0 to 1 percent slopes, occasionally flooded	15.61	9.7	0	59	2w
WsC2	Wise clay loam, 3 to 5 percent slopes, moderately eroded	13.59	8.44	0	30	3e
ReF	Real-Rock outcrop complex, 8 to 40 percent slopes	13.06	8.11	0	10	7e
TOTALS		160.98(*)	100%	-	27.63	5.44

(*) Total acres may differ in the second decimal compared to the sum of each acreage soil. This is due to a round error because we only show the acres of each soil with two decimal.



Harvey Ranch - TBD CR 174, Gatesville TX - 158+/- Acres

Coryell County, Texas, 159 AC +/-



- Cliff
- Service Entrance
- View
- Covered Parking
- RV Hookup
- Pens
- Large Barn
- 6 Guest Cabins
- Primary Road
- Road / Trail
- TBD CR 174
- Pond / Tank
- Wetlands
- Riparian
- Stream, Intermittent
- River/Creek
- Water Body